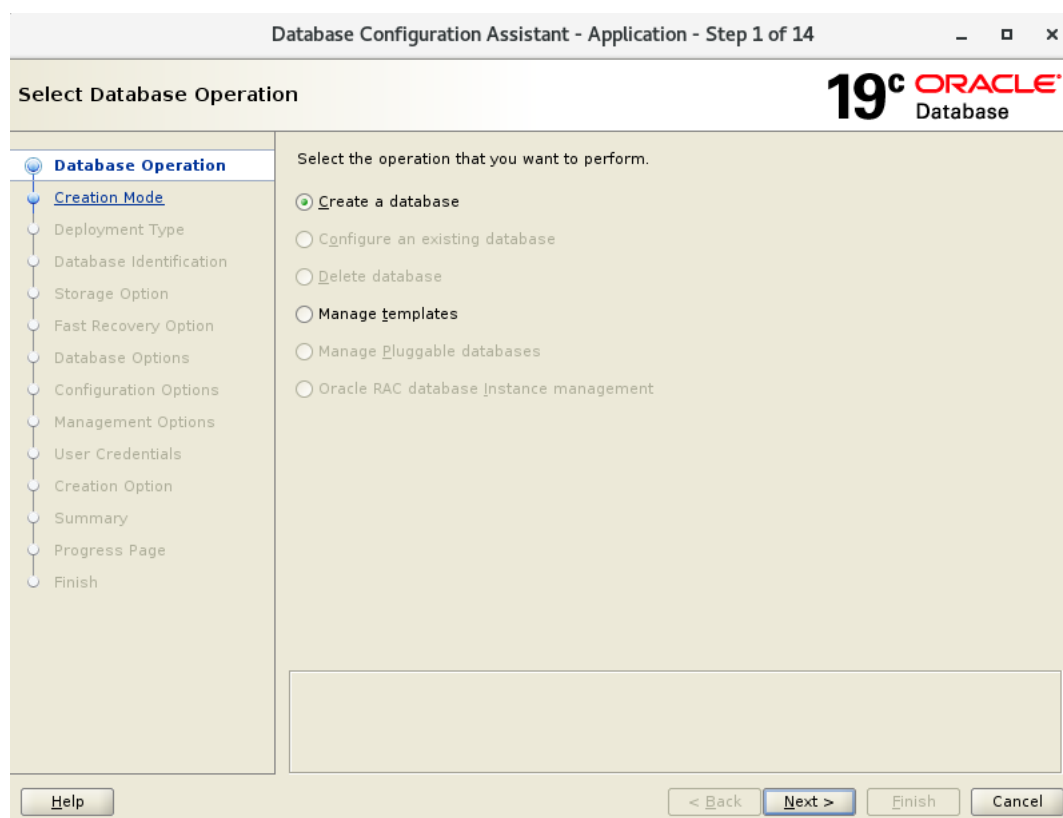


INSTALLATION OF ORACLE DATABASE 19C

Run Database Configuration Assistant (dbca) file from 19c Oracle Home location

```
[oracle@localhost bin]$ cd /u01/app/oracle/product/19.0.0/dbhome_1/bin/  
[oracle@localhost bin]$ pwd  
/u01/app/oracle/product/19.0.0/dbhome_1/bin  
[oracle@localhost bin]$ ls -ltrh dbc*  
-rwxr-x---. 1 oracle oinstall 7.6K Jan  1 16:21 dbca  
[oracle@localhost bin]$  
[oracle@localhost bin]$ . dbca
```

Select Create Database Option.



Select Advanced Configuration Option.

Database Configuration Assistant - Create a database - Step 2 of 14

19c ORACLE Database

Select Database Creation Mode

- Database Operation
- Creation Mode**
- Deployment Type
- Database Identification
- Storage Option
- Fast Recovery Option
- Database Options
- Configuration Options
- Management Options
- User Credentials
- Creation Option
- Summary
- Progress Page
- Finish

Typical configuration
 Advanced configuration

Global database name:

Storage type:

Database files location:

Fast Recovery Area (FRA):

Database character set:

Administrative password:

Confirm password:

Create as Container database

Pluggable database name:

Continue with Next Option

Database Configuration Assistant - Create a database - Step 3 of 14

19c ORACLE Database

Select Database Deployment Type

- Database Operation
- Creation Mode
- Deployment Type**
- Database Identification
- Storage Option
- Fast Recovery Option
- Database Options
- Configuration Options
- Management Options
- User Credentials
- Creation Option
- Summary
- Progress Page
- Finish

Select the type of database you want to create.

Database type:

Configuration type:

Select a template for your database.

Templates that include datafiles contain pre-created databases. They allow you to create a new database quickly. Use templates without datafiles only when necessary, such as when you need to change attributes like block size that cannot be altered after database creation.

| | Template name | Include datafiles | Details |
|----------------------------------|---|-------------------|------------------------------|
| <input type="radio"/> | Data Warehouse | Yes | View details |
| <input type="radio"/> | Custom Database | No | View details |
| <input checked="" type="radio"/> | General Purpose or Transaction Processing | Yes | View details |

Template location:

Select Database & Instance Name along with PDB Name

Database Configuration Assistant - Create a database - Step 4 of 14

19c ORACLE Database

Specify Database Identification Details

Provide a unique database identifier information. An Oracle database is uniquely identified by a Global database name, typically of the form "name.domain".

Global database name:

SID:

Service name:

Create as Container database

A Container database can be used for consolidating multiple databases into a single database, and it enables database virtualization. A Container database (CDB) can have zero or more pluggable databases (PDB).

Use Local Undo tablespace for PDBs

Create an empty Container database

Create a Container database with one or more PDBs

Number of PDBs:

PDB name:

Help < Back Next > Finish Cancel

Database Configuration Assistant - Create 'prod' database - Step 5 of 14

19c ORACLE Database

Select Database Storage Option

Use template file for database storage attributes

Storage type and location for database files will be picked up from the specified template (General Purpose or Transaction Processing).

Use following for the database storage attributes

All the database files will be put at the specified location below. You can customize the name and location of each datafile in the subsequent screen.

Database files storage type:

Database files location: Browse...

Oracle Managed files option will enable Oracle to automatically generate the names of the datafiles for simplified database management.

Use Oracle-Managed Files (OMF)

Help < Back Next > Finish Cancel

Enable FRA & Archive log Destination by checking dialogue Box

Database Configuration Assistant - Create 'prod' database - Step 6 of 14

19^c ORACLE Database

Select Fast Recovery Option

Choose the recovery options for the database.

- Specify Fast Recovery Area
 - Recovery files storage type: File System
 - Fast Recovery Area: {ORACLE_BASE}/fast_recovery_area/{DB_UNIQUE} [Browse...](#)
 - Fast Recovery Area size: 12732 MB
- Enable archiving [Edit archive mode parameters...](#)

[Help](#) [< Back](#) [Next >](#) [Finish](#) [Cancel](#)

If you want to create listener then feed entry else ignore

Database Configuration Assistant - Create 'prod' database - Step 7 of 14

19^c ORACLE Database

Specify Network Configuration Details

Listener selection

Listeners from current Oracle home are listed below. Specify the listener name and port to create a new listener in current Oracle home.

| Name | Port | Oracle home | Status |
|------|------|-------------|--------|
|------|------|-------------|--------|

Create a new listener

Listener name:

Listener port:

Oracle home: /u01/app/oracle/product/19.0.0/dbhome_1

[Help](#) [< Back](#) [Next >](#) [Finish](#) [Cancel](#)

Skip the below vault option

Database Configuration Assistant - Create 'prod' database - Step 8 of 15

Select Oracle Data Vault Config Option **19c ORACLE Database**

- Database Operation
- Creation Mode
- Deployment Type
- Database Identification
- Storage Option
- Fast Recovery Option
- Network Configuration
- Data Vault Option**
- Configuration Options
- Management Options
- User Credentials
- Creation Option
- Summary
- Progress Page
- Finish

Configure Oracle Database Vault

Database Vault owner:

Password: Confirm password:

Create a separate account manager

Account manager:

Password: Confirm password:

Configure Oracle Label Security

Configure Oracle Label Security with OJD

Help < Back Next > Finish Cancel

Check the sample schema option

Database Configuration Assistant - Create 'prod' database - Step 9 of 15

Specify Configuration Options **19c ORACLE Database**

- Database Operation
- Creation Mode
- Deployment Type
- Database Identification
- Storage Option
- Fast Recovery Option
- Network Configuration
- Data Vault Option
- Configuration Options**
- Management Options
- User Credentials
- Creation Option
- Summary
- Progress Page
- Finish

Memory Sizing Character sets Connection mode **Sample schemas**

Installing sample schema configures the Human Resources schema. The contents are stored under the SYSAUX tablespace.

Add sample schemas to the database

Help < Back Next > Finish Cancel

We can skip this part as we are not configuring OEM

Database Configuration Assistant - Create 'prod' database - Step 10 of 15

19^c ORACLE[®] Database

Specify Management Options

Specify the management options for the database.

- Configure Enterprise Manager (EM) database express**
EM database express port:
 Configure EM database express port as global port
- Register with Enterprise Manager (EM) cloud control
OMS host:
OMS port:
EM admin username:
EM admin password:

Navigation: < Back, Next >, Finish, Cancel

Specify DB Superuser Credential

Database Configuration Assistant - Create 'prod' database - Step 11 of 15

19^c ORACLE[®] Database

Specify Database User Credentials

You must specify passwords for the following user accounts in the new database for security reasons.

Use different administrative passwords

| | Password | Confirm password |
|----------|----------------------|----------------------|
| SYS | <input type="text"/> | <input type="text"/> |
| SYSTEM | <input type="text"/> | <input type="text"/> |
| PDBADMIN | <input type="text"/> | <input type="text"/> |

Use the same administrative password for all accounts

Password: Confirm password:

Messages:

⚠ Password: [DBT-06208] The 'ADMIN' password entered does not conform to the Oracle recommended standards.

Navigation: < Back, Next >, Finish, Cancel

Click on yes and proceed

Database Configuration Assistant - Create 'prod' database - Step 11 of 15

19c ORACLE Database

Specify Database User Credentials

You must specify passwords for the following user accounts in the new database for security reasons.

Use different administrative passwords

Password: Confirm password:

Database Configuration Assistant

[DBT-06208] The 'Admin' password entered does not conform to the Oracle recommended standards.

Are you sure you want to continue ?

Messages:

[DBT-06208] The 'ADMIN' password entered does not conform to the Oracle recommended standards.

Help < Back **Next >** Finish Cancel

Click on Create Database Option and continue

Database Configuration Assistant - Create 'prod' database - Step 12 of 15

19c ORACLE Database

Select Database Creation Option

Select the database creation options.

Create database

Specify the SQL scripts you want to run after the database is created. The scripts are run in the order listed below.

Post DB creation scripts:

Save as a database template

Template name:

Template location:

Description:

Generate database creation scripts

Destination directory:

Following advanced configuration options can be used to configure initialization parameters and customize database storage locations.

Help < Back **Next >** Finish Cancel

Database Configuration Assistant - Create 'prod' database - Step 13 of 15

19c ORACLE Database

Summary

- Database Operation
- Creation Mode
- Deployment Type
- Database Identification
- Storage Option
- Fast Recovery Option
- Network Configuration
- Data Vault Option
- Configuration Options
- Management Options
- User Credentials
- Creation Option
- Summary**
- Progress Page
- Finish

Database Configuration Assistant

- Global Settings**
 - Global database name: prod
 - Configuration type: Oracle Single Instance database
 - SID: prod
 - Create as Container database: Yes
 - Pluggable Database Name: prodpdb
 - Number of Pluggable Databases: 1
 - Use Local Undo tablespace for PDBs: Yes
 - Database Files Storage Type: File System
 - Memory Configuration Type: Automatic Memory Management
 - Template name: General Purpose
- Initialization Parameters**
 - audit_file_dest: {ORACLE_BASE}/admin/{DB_UNIQUE_NAME}/adump
 - audit_trail: db
 - compatible: 19.0.0
 - control_files: ("{ORACLE_BASE}/oradata/{DB_UNIQUE_NAME}/control01.ctl", "{ORACLE_BASE}/oradata/{DB_UNIQUE_NAME}/control02.ctl")
 - db_block_size: 8192 BYTES
 - db_name: prod
 - db_recovery_file_dest: {ORACLE_BASE}/fast_recovery_area/{DB_UNIQUE_NAME}
 - db recovery file dest size: 12732 MB

Save Response File...

Help < Back Next > Finish Cancel

Database Configuration Assistant - Create 'prod' database - Step 14 of 15

19c ORACLE Database

Progress Page

- Database Operation
- Creation Mode
- Deployment Type
- Database Identification
- Storage Option
- Fast Recovery Option
- Network Configuration
- Data Vault Option
- Configuration Options
- Management Options
- User Credentials
- Creation Option
- Summary
- Progress Page**
- Finish

Progress

8%

Copying database files : In Progress

Status

| | |
|---|-------------|
| ➔ DB Creation | In Progress |
| ✔ • Prepare for db operation | Succeeded |
| ➔ • Copying database files | In Progress |
| • Creating and starting Oracle instance | Pending |
| • Completing Database Creation | Pending |
| • Creating Pluggable Databases | Pending |
| • Executing Post Configuration Actions | Pending |

Details Revert All Revert Retry Skip

DBCA Log Location:
/u01/app/oracle/cfgtoollogs/dbca/prod/trace.log_2022-01-01_04-31-57PM

Help < Back Next > Finish Cancel



Finish

- Database Operation
- Creation Mode
- Deployment Type
- Database Identification
- Storage Option
- Fast Recovery Option
- Network Configuration
- Data Vault Option
- Configuration Options
- Management Options
- User Credentials
- Creation Option
- Summary
- Progress Page

Finish

Database creation complete. For details check the logfiles at:
/u01/app/oracle/cfgtoollogs/dbca/prod.

Database Information:

Global Database Name: prod
System Identifier(SID): prod
Server Parameter File name: /u01/app/oracle/product/19.0.0/dbhome_1/dbs/spfileprod.ora

Note: All database accounts except SYS and SYSTEM are locked. Select the Password Management button to view a complete list of locked accounts or to manage the database accounts. From the Password Management window, unlock only the accounts you will use. Oracle strongly recommends changing the default passwords immediately after unlocking the account.

[Password Management...](#)

[Help](#)

[< Back](#)

[Next >](#)

[Finish](#)

[Close](#)